

Supporting Safe, Strong, and Growing Communities

Residents have told us clearly that they value safe neighbourhoods, reliable infrastructure, strong community services, and responsible financial planning. The approved 2026 Property Tax Plan reflects those priorities while balancing the need to remain fair and responsible during a time when many households continue to face rising costs.

The 2026 tax plan includes a 2.03% increase to the general municipal levy, along with adjustments to the City's flat levies and base taxes. At the same time, the Proactive Policing Levy has been eliminated, and the base tax system has been restructured to ensure that every property contributes more fairly to essential services residents rely on every day.

For residential properties, the net change to the flat levies and base tax is just \$12 for the year.

Significant effort was also made to keep the commercial-to-residential tax ratio stable so Prince Albert remains competitive and open for investment.

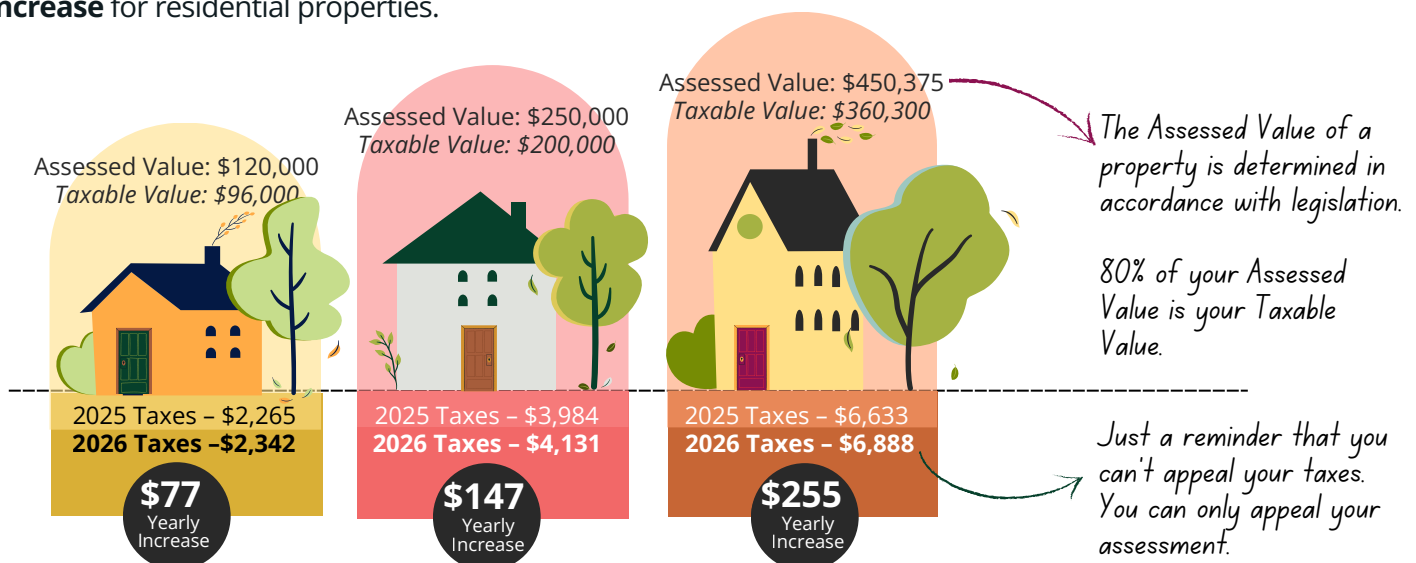
This budget reflects careful work to reduce impacts on residents while maintaining services and continuing investments in infrastructure and community amenities. The City will also continue efficiency reviews to ensure tax dollars are used effectively and responsibly.

Prince Albert is a city of opportunity and belonging - a community we are proud to call home. Thank you for your continued investment in Prince Albert.

Bill Powalinsky,
Mayor of Prince Albert

Residential Property Tax Impact

Changes in 2026 include a **2.03% general municipal levy increase** and a net **\$12 base/special tax increase** for residential properties.

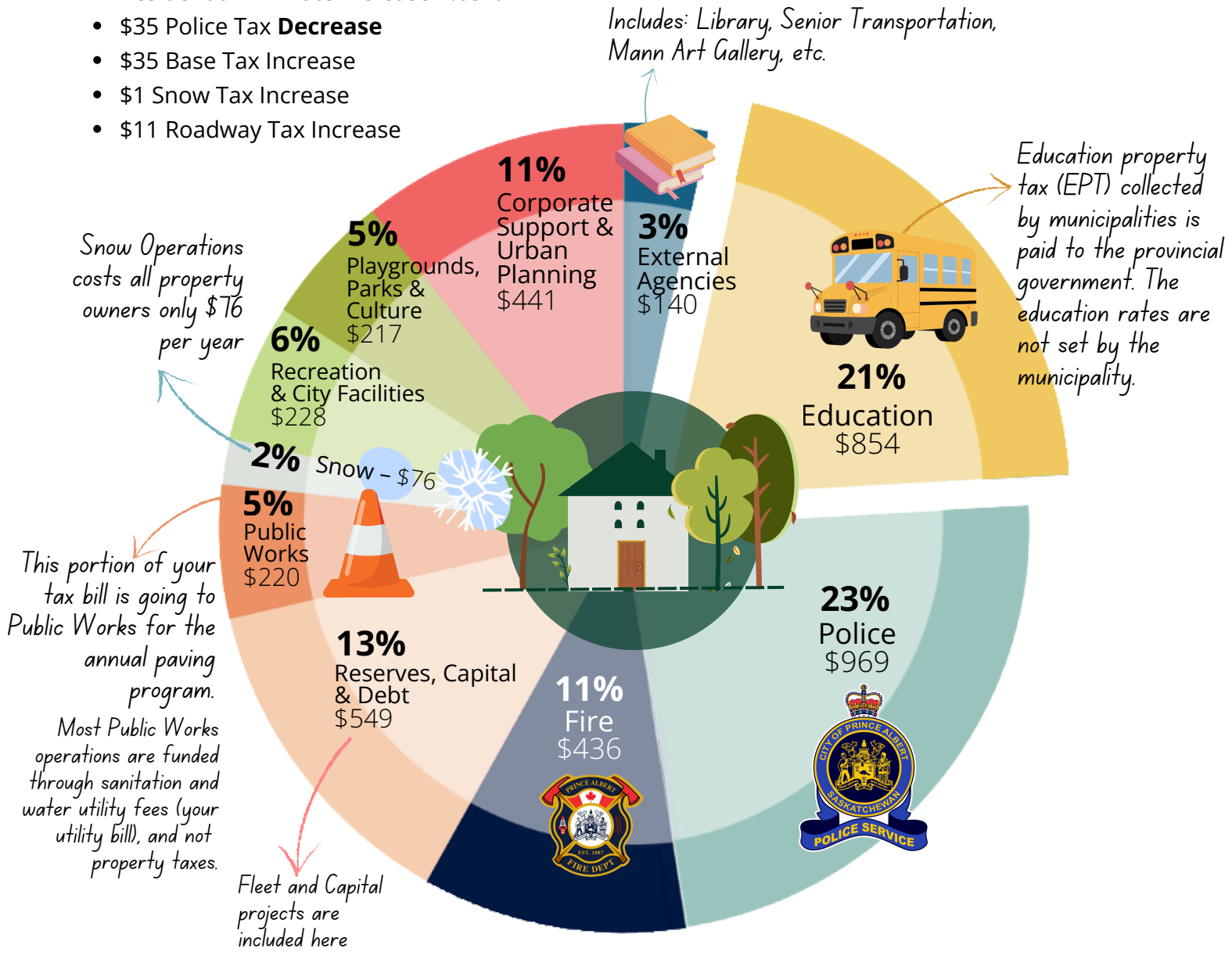


What Your Property Taxes Pay For

A home in Prince Albert, assessed at \$250,000, with a **Taxable Value of \$200,000** (80% of assessed value) and a total annual property tax bill of \$4,131, which pays for the following services:

2026 Residential Changes include:

- Residential Mill Rate Increase **2.03%**
- \$35 Police Tax **Decrease**
- \$35 Base Tax Increase
- \$1 Snow Tax Increase
- \$11 Roadway Tax Increase



Every property tax dollar is allocated to specific budget areas approved by City Council, such as policing, fire services, road maintenance, and other core municipal services. These funds are **not** interchangeable between unrelated budgets and must be used within the purposes set out in the approved budget.

TAX DUE DATE: JUNE 30, 2026

LATE PAYMENT PENALTIES APPLY. See your property tax bill for details.