



City of Prince Albert

Service Connection Note

CIVIC ADDRESS _____ DATE _____

LOT _____ BLOCK _____ PLAN _____

STORM SEWER SERVICE

PIPE: DIA. _____ TYPE _____ LENGTH _____

SANITARY SEWER SERVICE

PIPE: DIA. _____ TYPE _____ LENGTH _____

WATER SERVICE

PIPE: DIA. _____ TYPE _____ LENGTH _____

THAW WIRE: Y / N LENGTH _____

FITTING SIZES: CLAMP _____ CORP _____ CURB _____

SPECIALS _____

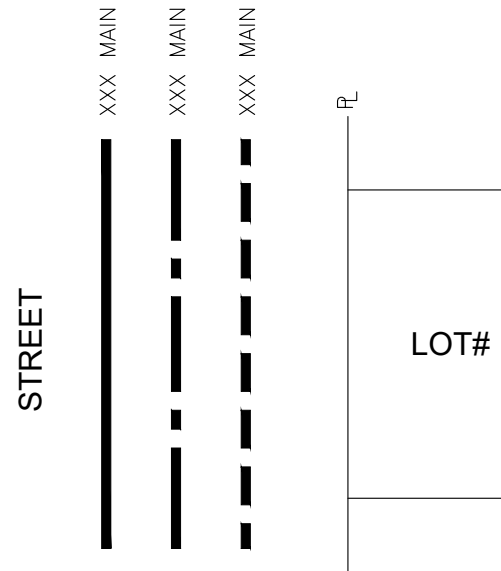
TRENCHING

LENGTHS: MACHINE _____ HAND _____ AUGER _____

OTHER _____

Service Connection Tie-in

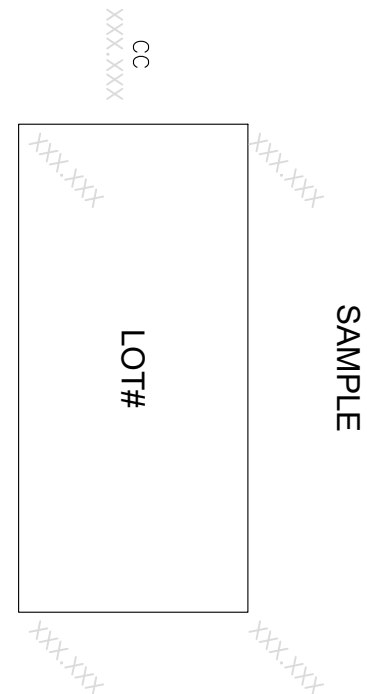
SHOW LOCATION OF WATER AND SEWER SERVICES IN RELATION TO LOT PROPERTY LINES



Lot Grading Plan

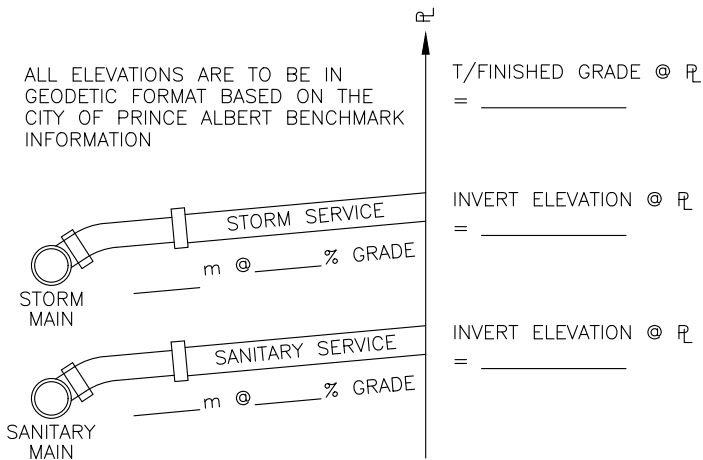
PROVIDE DIAGRAM OF TOP VIEW OF LOT INDICATING FINISHED GRADE AT EACH PROPERTY DEFLECTION POINT AND ELEVATION AT THE STAMPED CC

STREET



Service Connection Profile

ALL ELEVATIONS ARE TO BE IN GEODETIC FORMAT BASED ON THE CITY OF PRINCE ALBERT BENCHMARK INFORMATION



NOTE: MINIMUM GRADE FOR 250mm STM SEWER PIPE IS 0.50%.
 MINIMUM GRADE FOR 100mm SAN SEWER PIPE IS 2.00%.
 MINIMUM GRADE FOR 150mm SAN SEWER PIPE IS 1.00%.

CITY OF PRINCE ALBERT
 PUBLIC WORKS

APPROVED
Wes Hicks

SERVICE CONNECTION NOTE
DEVELOPMENTS WITH STORM SEWER

SCALE N.T.S.

No.	DATE	REVISION
1	Feb 2017	REVISED DETAIL TITLE

DRAWN S. NUMEDAHL | DESIGNED N. MILLER | DATE MAR. 2015

DWG. No. 00-01-21